



AXOLUTE

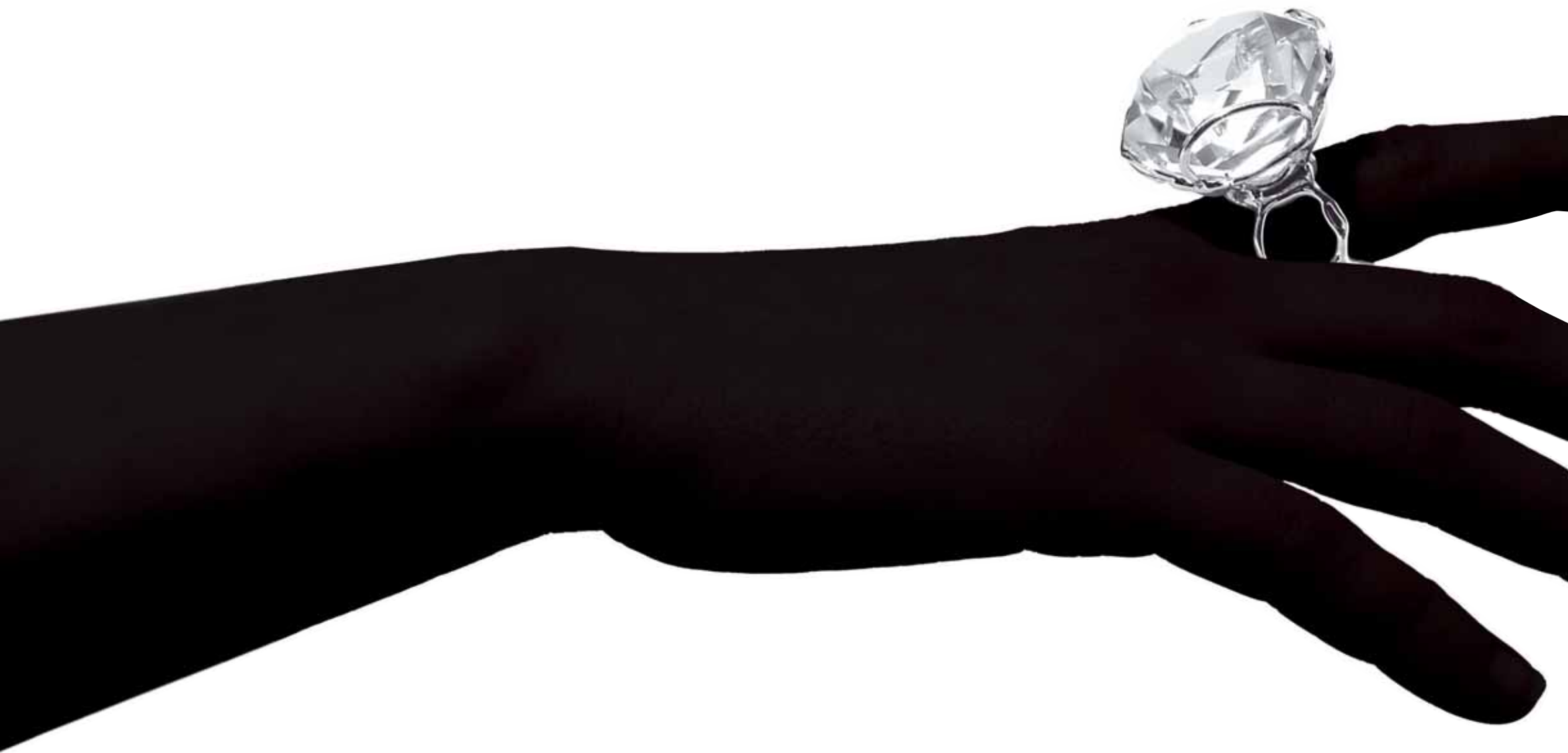


BE AXOLUTE.



Axolute is an innovative system guaranteed by the proven know-how of Bticino. It offers unprecedented choice of fine materials and finishes, along with the modern performance features of digital technology, from security to communication to entertainment. **Axolute** means the best of design and technology, perfected down to the smallest details, integrated in a complete system of refined, concise elegance. And, above all, it means personalization. With **Axolute** it is possible to choose functions to meet individual needs, selecting forms, materials and finishes in tune with specific lifestyles, to give interiors a new, exclusive value.







Axial switch, brushed aluminium

Axial control. This innovative design keeps the buttons perfectly aligned even after use, guaranteeing a perfect planar surface for maximum formal elegance. The tiny grain, which can be lit with a single blue LED, is a refined design detail offering a tactile and visual point of reference. The finishes of the keys, in glossy metallized aluminium and anthracite, coordinated with the various materials of the plates, give **Axolute** an elegant technological image. A double coating creates a special lens effect on the keys to accentuate their brightness and eliminate fingerprint marks.



Style switch, Axolute aluminium



Style control. With raised button and axial movement, this model represents a balanced blend of innovation and tradition, responding to a widespread desire for material presence. The classic image interpreted by modern design, featuring a chromium-plated key and enhanced by optional luminous highlighting of the perimeter with blue LEDs, sums up the primary value of **Axolute**: its capacity to correspond to different lifestyles, allowing users to select the proposal that best responds to their desires.



Soft touch. This completely silent digital control opens the way for a new kind of gesture: instead of pressure, a simple, gentle touch to turn on and regulate light. A soft caress to illuminate, create varied situations of shadow or darken a space. The luminous LEDs underline the elegance of the **Axolute** design, making the controls easy to find by touching and recognizable even in the dark.



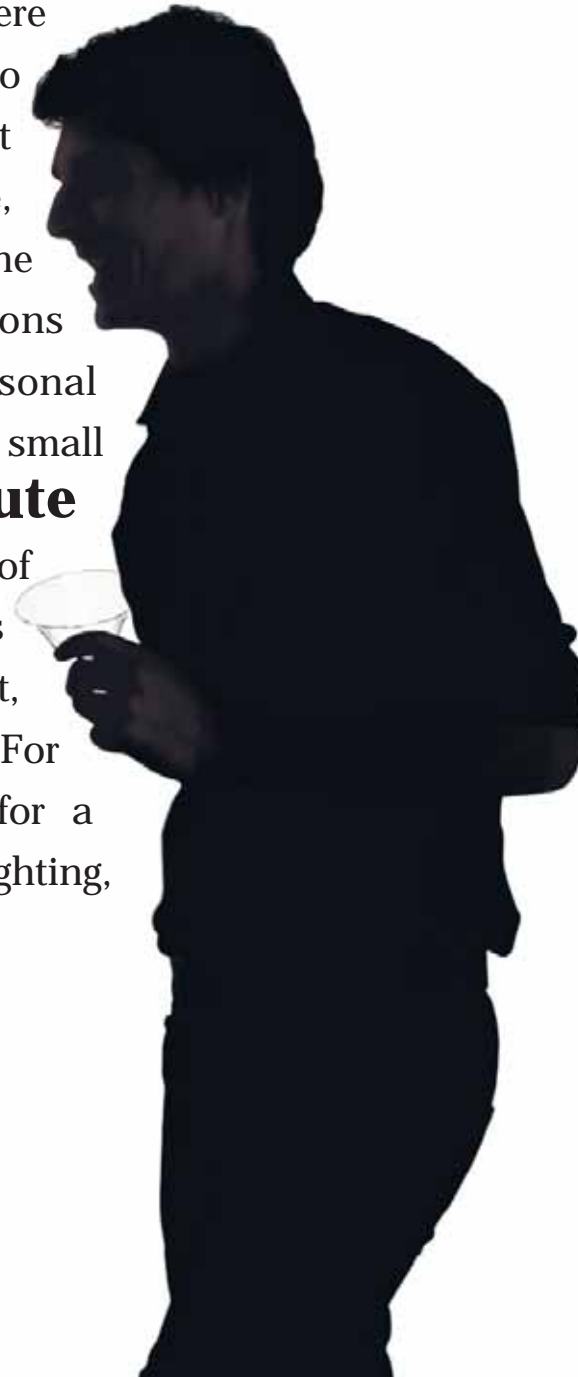
Soft touch, black glass





Scenary touch, gold mat

Scenario touch. An evolution in digital control that permits activation of both functions and scenarios. The sphere of action has expanded: not just to turn on, turn off or adjust light, but also to trigger, with a single gesture, different scenarios generated by the combination of multiple functions configured in keeping with personal needs and desires. Four keys with small illuminated grains make **Axolute** scenario touch a control center of emotions. With a single touch it is possible to configure four different, easily reprogrammed scenarios. For example, the ideal atmosphere for a party: blinds lowered, relaxing lighting, background music.



Touchscreen. An evolved digital display for simple, intuitive activation and control of functions in living environments. The frame encloses a screen featuring color icons with sophisticated, effective graphics. Through its own ideograms, the **Axolute** touchscreen unveils its technological potential. The customized displays permit easy navigation through the various menus using selected icons. No instruction manual is required to activate the burglar alarm, program climate control or broadcast sound.





Touschscreen, brushed titanium



Video display, light titanium



Video display.

The built-in color video intercom with vivavoce, for positioning anywhere in the house and not just by the entrance, represents a radical evolution: no longer a telephone attached to the wall, but a liquid crystal flatscreen for high-definition images, available

in a range of design variants. The appearance of the **Axolute** video display is coordinated down to the smallest details with that of the electrical fixtures.





Video station. A highly evolved video intercom with an elegant design and vivid presence, to frame the high-resolution images of the LCD color screen. As a home multimedia control center, the unit integrates and manages all domestic signals. It permits total control of the home and all its various activities, from security to wellness to entertainment. The **Axolute** video station is an efficient, easy-to-use terminal for relations with situations both inside and outside the home. Thanks to its outstanding design, refined finishes and large screen, the unit becomes an attractive feature in any decor.

Video station, Kristall glass



Woods. The wooden cover plates suggest a sense of continuity with tradition and the world of fine cabinet-making. In solid wood, with the horizontal grain of teak and wengé, their geometric effects work perfectly with the rectangular forms. Solid maple, cherry and walnut, with their sunburst patterns, are paired with elliptical forms. The introduction of a detailed range of woods takes **Axolute** into the sphere of the senses, offering warm tactile contact, the emotion of a delicate atmosphere of memories.

Ashwood, axial switch



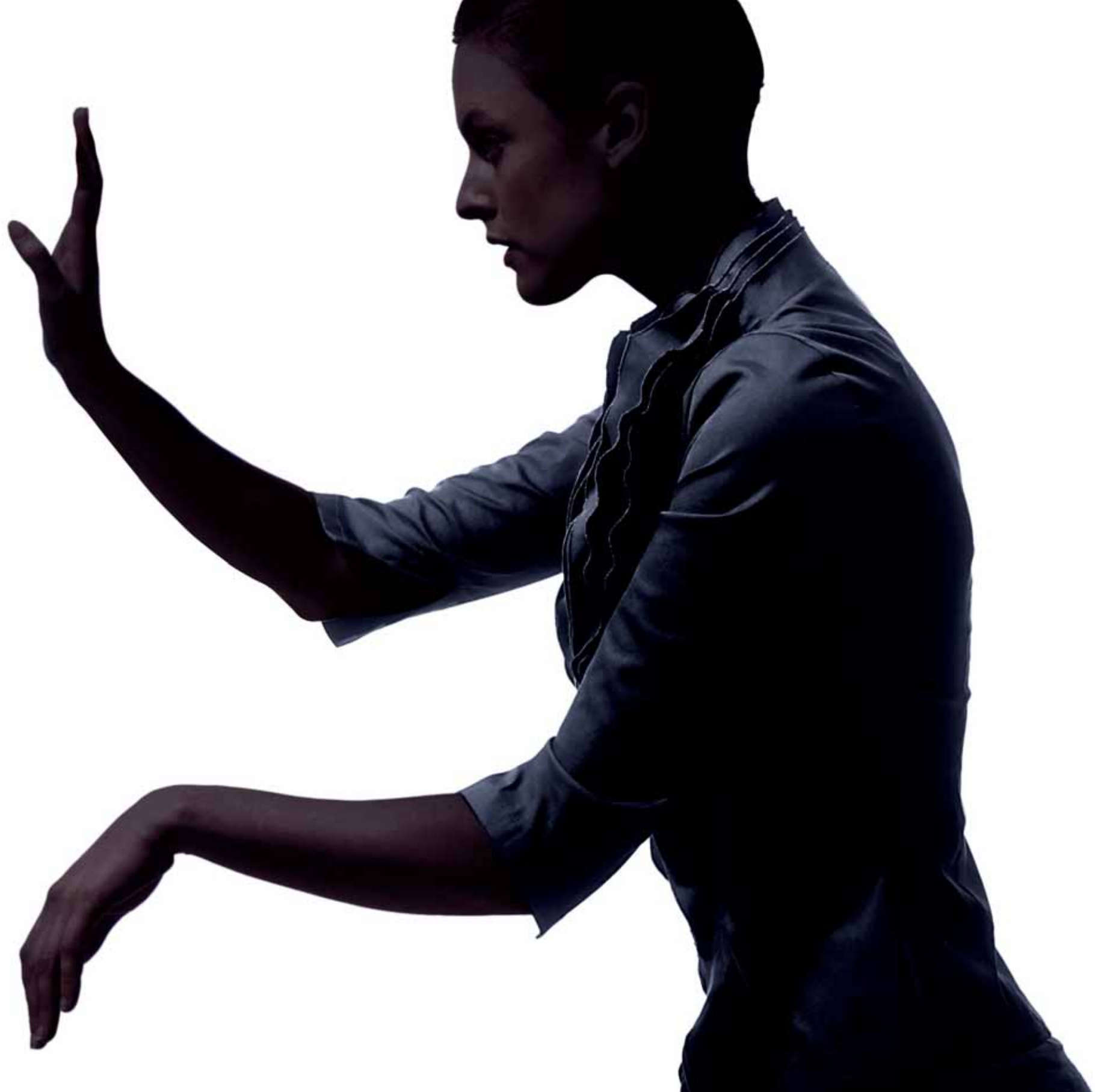
Wenge, axial switch

Steel. The family is composed of aluminium, zamak and stainless steel. Light, unalterable aluminium, which adapts to the finest mechanical workmanship thanks to its special properties, is used in the rectangular form. Ductile zamak is shaped in an elliptical form for a soft profile. **Axolute** introduces an



Shiny inox Alessi
steel Style switch

unprecedented feature in the universe of materials: stainless steel, developed together with Alessi, the well-known Italian company based specialized in the production of designer housewares. In the elliptical form, the steel gives the convex design the magic of homogeneous, limpid reflection.



Stone. Hewn slate and Carrara marble, utilized in the rectangular forms, grant materic substance to physical contact with controls, with architectural overtones that add nobility to the design. The rough finish and rugged character of the slate create a contrast with the sheen of the metallized keys. The clarity and silky finish of the marble suggest images of classical perfection. The stones, which project **Axolute** into the dimension of nature, give the controls a noble image, ideal for prestigious architectural settings.

Carrara marble, digital switch



Slate, digital switch





Leather. An original choice in the area of finishes, contributing to the special character of the path of research of Bticino in the world of materials. Utilized in the dark tones of coffee and light shades of sand, for the elliptical form, it suggests tactile and aesthetic associations with the most refined saddlery, evoking the image of traditional leather furnishings, an eloquent symbol of lasting value. The leather finishes give **Axolute** the unique prestige of a high fashion accessory.

Coffee leather, soft touch



Sand leather, soft touch

Liquid orange, scenario touch



Liquid blue, scenario touch

Axolute Plastic. A rare, elegant image for this artificial material, enhanced by a dual finish – one to determine the color, the other transparent – that gives depth to the silhouette, taking on the brightness and density of oriental lacquer. **Axolute**, thanks to its refined design, restores the exclusive aura plastic possessed in the mid-Fifties, when it was first introduced in the field of designer furnishings.



Liquid white, scenario touch



Blue glass, axial switch



Glass. In flat panes, with diamond-cut corners, utilized in the rectangular form, glass brings out the geometric perfection of the plates, giving **Axolute** the charm of transparency and the clarity of modernity. A symbol of purity, glass can easily be combined with a wide range of decor styles. It captivates with the magic of its metamorphosis: sand transformed into crystal.



Mirror glass, axial switch



Aluminium



Brushed aluminium



Brushed anthracite



Brushed titanium

Lacquered



White Limoges



Red China



Green Sèvres



Blue Meissen

Anodized



Brushed chrome



Brushed bronze



Brushed mercury



Silver

Wood



Ashwood



Teak



Wenge

Glass



Black glass



Blue glass



Mirror glass



Kristall glass

Stone



Slate



Carrara marble

Metallized



Axolute aluminium



Axolute anthracite



Solid black

Liquid



Liquid white



Liquid ivory



Liquid blue



Liquid orange



Liquid green

Glossy



Shiny gold



Silver mat



Light titanium



Gold mat

Metallized



Axolute aluminium



Axolute anthracite



Solid black

Liquid



Liquid white



Liquid ivory



Liquid blue



Liquid orange



Liquid green

Glossy



Shiny gold



Silver mat



Light titanium



Gold mat

Wood



Maple



Cherrywood



Walnut

Corian®



Dusk



Sandstone

Leather



Sand leather



Coffee leather

Steel



Shiny steel



Brushed steel



Shiny inox Alessi steel



Brushed inox Alessi steel

Materic personalization

Axolute. Forty-one available finishes for great freedom of choice. And if that does not suffice, Axolute moves straight into the world of personalized solutions: “plates manufactured with client-selected materials”. The glass plate can be opened and customized by inserting other materials or decorative elements beneath the glass, from fabrics to passementerie. Or it can be utilized as a template for the work of a personally selected craftsman. **Axolute** transforms switchplates into ornamental details that can be varied in keeping with the style of the decor and personal preferences.



Kristall plate

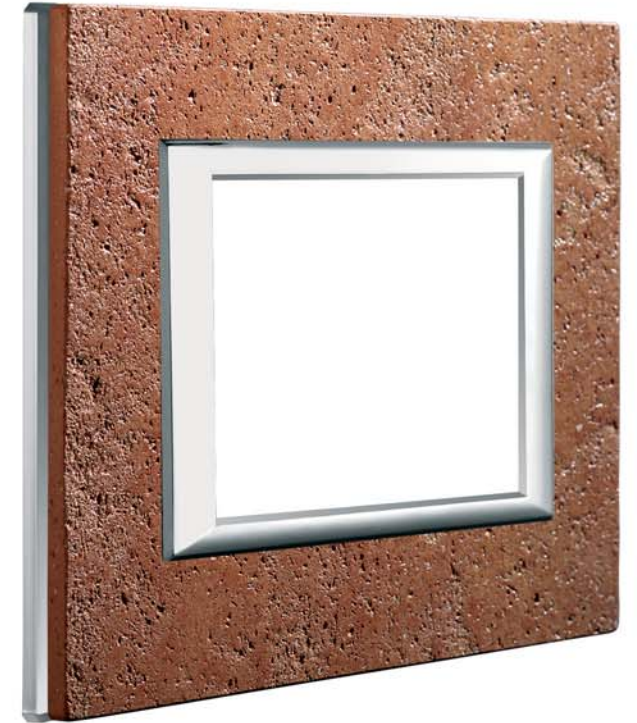
Selected material to insert



Base

Glass cover to replace

Chromed frame



Personalized plate

Technological personalization

Axolute. The electrical system becomes “custom” from a technological viewpoint as well. For the first time it is possible for every interface, with different functions and interaction modes, to have the same aesthetic. Coordination becomes total and also extends to the video intercom, in a perfect match with the rest of the system.



Axial switch



Soft touch



Scenario touch

Axolute offers the possibility of choosing functions and technological content based on personal requirements, from the traditional switch to the most highly evolved color displays. The scenario touch and the touchscreen, for example, make it possible to create scenarios, or combinations of functions, to adapt to a given lifestyle. The scenarios can be reproduced or modified over time. Like modern cellular telephones and personal computers, the touchscreen permits personalization of graphics and icons, as well as selection of the messages and information to be displayed.



Touchscreen



Video display



Video station

Recommendations for the choice of Axolute

The **Axolute** system can be installed over an existing electrical system, without substitution or masonry intervention. Just replace the fixtures and plates.

The **Axolute** video intercom can always be installed in any type of single-family home. For installation in an apartment building, check with the building administrator on compatibility with the general intercom system.

In the world of **Axolute** changing plates is easy. No specialized labor is required to update the look of the electrical system. Houses change, walls are repainted, partitions are moved, colors and furnishings are altered. With Axolute the electrical fixtures can adapt to change, replacing existing plates with new ones coordinated with the home's new image.

The **Axolute** digital technology presented in this document is **My Home**, the Bticino home automation system developed to make life in the home safer and more secure, comfortable and simpler. The system stands out for the quality of its design and displays, highly evolved interfaces that give the digital equipment refined aesthetics combined with new interaction modes. With Axolute, home automation is not just something to use, but also something to display.

Bticino spa
Via Messina 38 - 20154 Milan Italy
www.bticino.com





bticino

AX06B/GB I.P.

